

LIQUIFIED PROPANE PLANT

CLAREMONT, NH

When Rymes Propane & Oils, Inc., wanted to expand their LP Bulk Plant in Claremont, NH, SFC Engineering Partnership, Inc., (SFC) was selected to provide fire protection engineering services for the project.

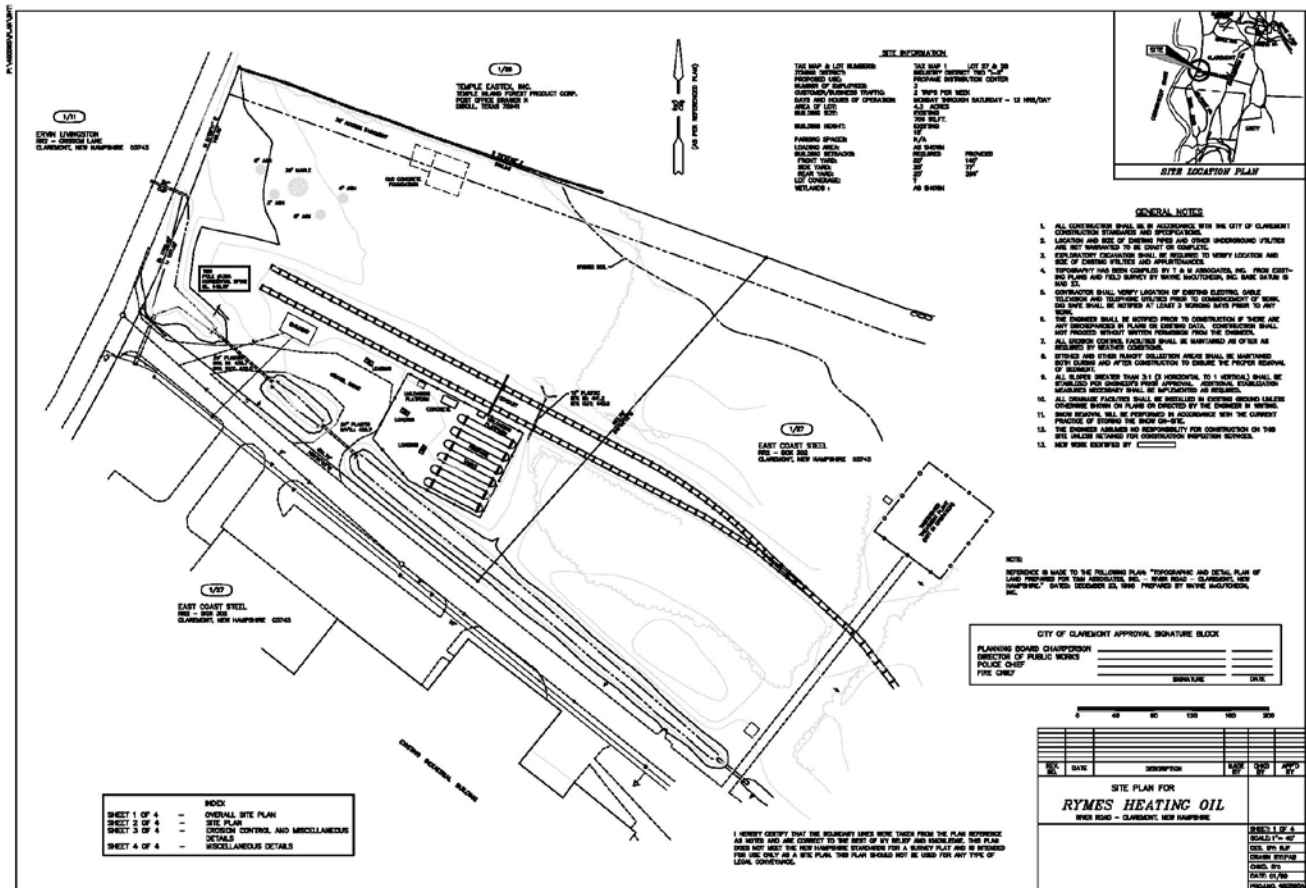
Fire safety analysis of the proposed expansion included these considerations: analysis of conditions of hazards on site, exposures to and from other properties, population density, congestion within the site, effectiveness of local fire department based on an adequate water supply, response time and training, and adequate application of water by hose stream or other method for effective control of leakage, fire or other exposures.

SFC also prepared an Environmental Protection Agency Risk Management Plan (EPA-RMP) for the existing liquified propane gas facility.

OWNER
Rymes Propane & Oils Inc

CONTACT
John Rymes
PO Box 2948
Concord, NH 03302

SCOPE OF SERVICES
• Fire Protection Engineering



REPRESENTATIVE PROJECTS

